

CHARMILL

RESIDENTIAL



Abbey Road, St John's Wood NW8

£675



Abbey Road, St John's Wood NW8



Description

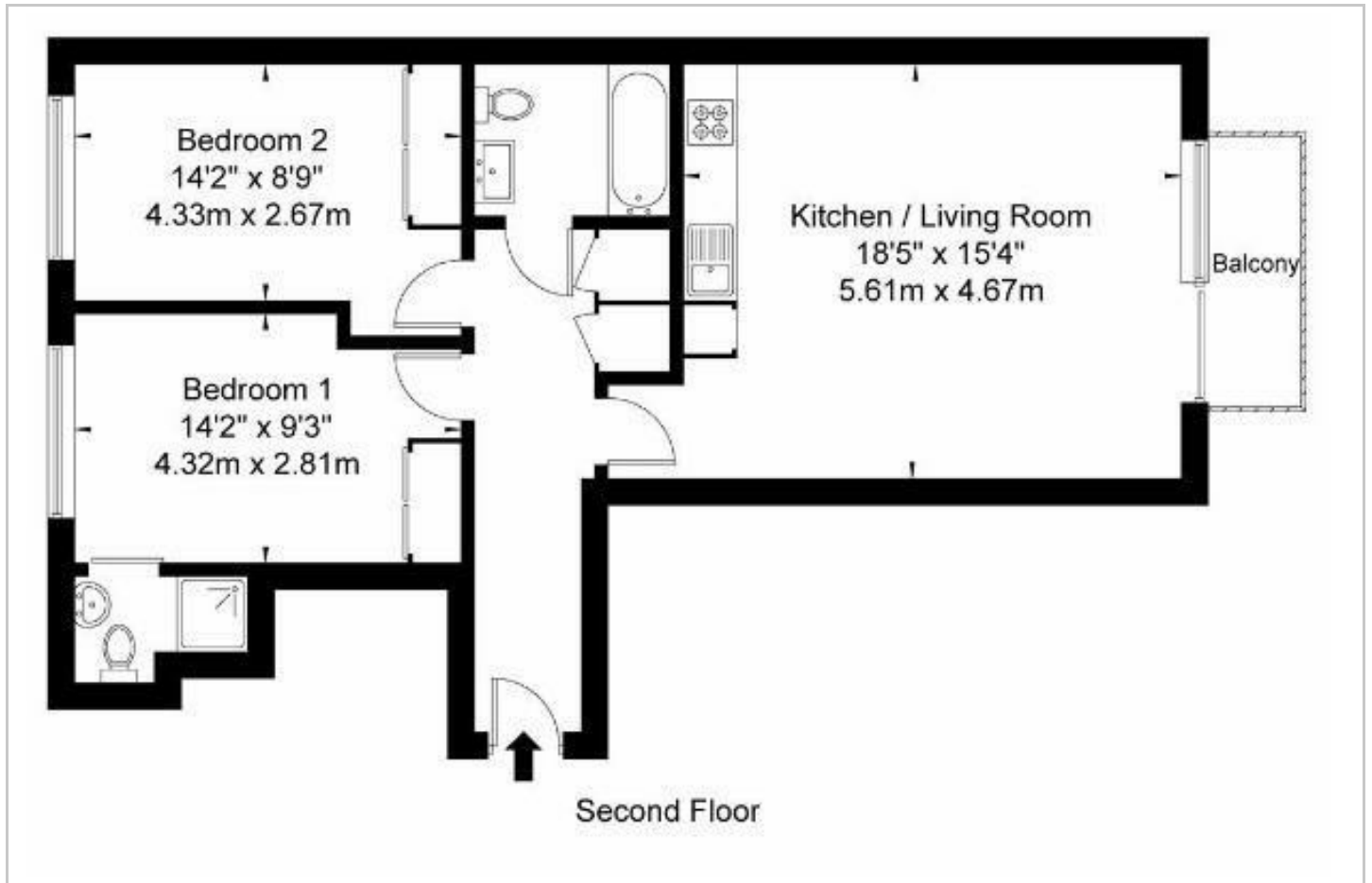
A bright and well-proportioned two bedroom apartment situated on the second floor (with lift) of a modern purpose-built block on the famous Abbey Road. This property comprises an open plan kitchen/reception room with wooden flooring and access to a private balcony, two double bedrooms both with built-in wardrobes, one en-suite shower room and a family bathroom. The apartment is conveniently located moments from the cafes, restaurants and shops on both Boundary Road and St John's Wood High Street. The property is also very well positioned for numerous transport links with South Hampstead Overground station 0.4 miles away, Kilburn Park Underground station (Bakerloo line) 0.6 miles away and St John's Wood station (Jubilee line) 0.7 miles away.

- Two bedrooms
- Two bathrooms
- Private balcony
- Open plan kitchen/reception room
- Utility room
- Lift

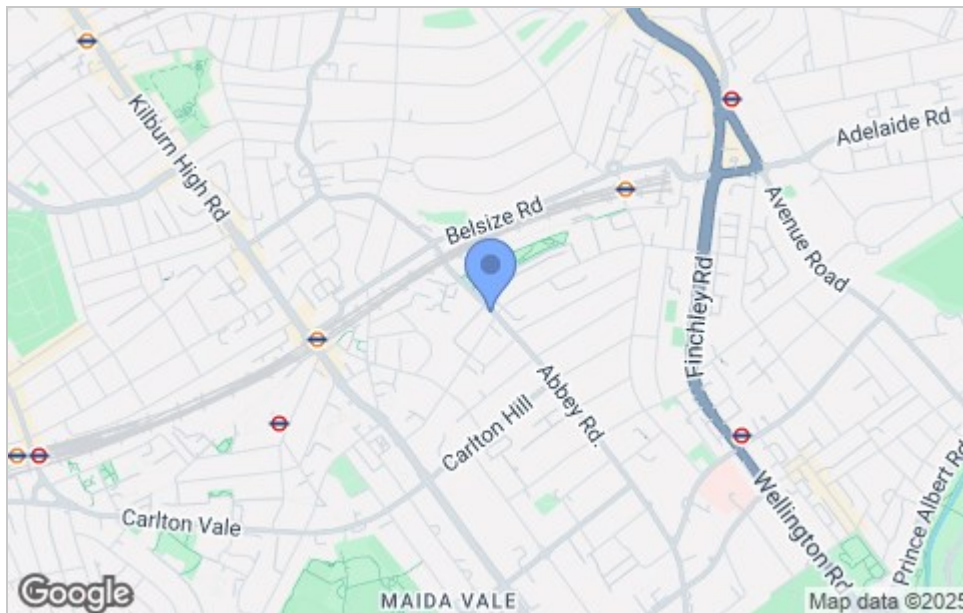




Floor Plan



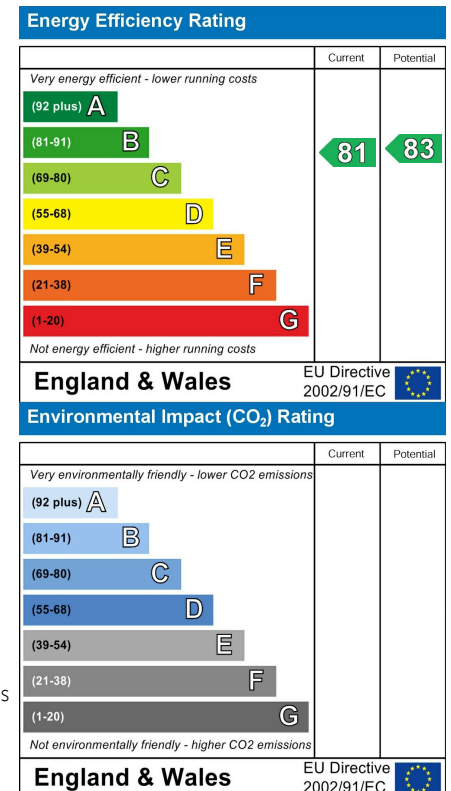
Area Map



Viewing

Please contact our Lettings Team on 020 7046 6276 if you wish to arrange a viewing appointment for this property or require further information.

Energy Efficiency Graph



These particulars, whilst believed to be accurate are set out as a general outline only for guidance and do not constitute any part of an offer or contract. Intending purchasers should not rely on them as statements of representation of fact, but must satisfy themselves by inspection or otherwise as to their accuracy. No person in this firm's employment has the authority to make or give any representation or warranty in respect of the property.

020 7046 6276 • lettings@charmillresidential.co.uk • 51 Maida Vale, Little Venice, London W9 1SD
 charmillresidential.co.uk